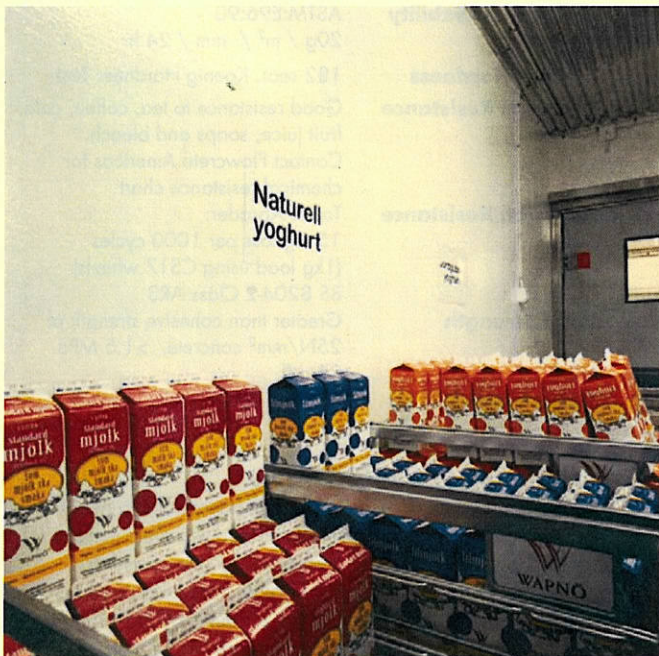
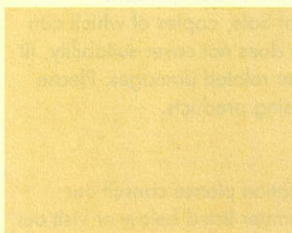




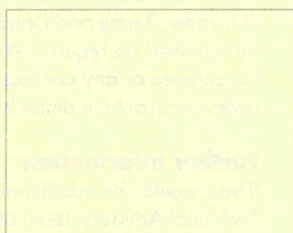
Peran WW Reinforced



Standard Color Chart



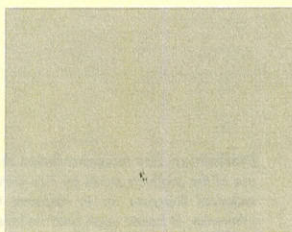
Beige



White



Light Gray



Medium Gray

The applied colors may differ slightly from the examples shown above. Contact our customer services for a true color sample or a special color match.

* Additional coat is required for White and Light Gray to achieve opacity.

Description

Peran WW Reinforced is a glass fiber reinforced covering for existing and new walls, utilizing a two-component water dispersed high performance epoxy resin vertical grade coating, available in a range of colors.

Uses

Ideally used in kitchens, slaughter houses, hygiene areas, food and pharmaceutical manufacturing and packaging areas where easy clean, hygienic wall finishes are required.

Available in two grades

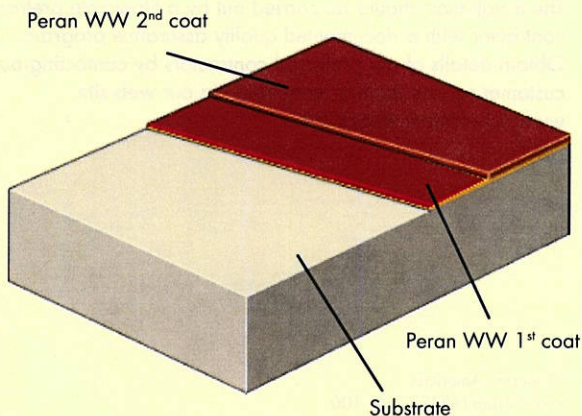
Standard: Incorporates a single layer of 300 gram glass mat.

Super: Incorporates one layer of 300 gram glass mat and one layer of 100 gram glass tissue.

Benefits

- Hygienic
- Vapor permeable
- Can be applied to damp substrates
- Cost effective
- Easy to apply
- Resists mold growth
- Enhances appearance of working environment
- Solvent free
- Low odor and taint
- Resistant to a wide range of chemicals

System Design



Model Specification

Product: Peran WW Reinforced
Finish: Gloss
System: Standard or Super
Preparatory work and application in accordance with suppliers instructions.
Supplier: Flowcrete Americas
Telephone: Customer Service 936 539 6700

Substrate Requirements

Concrete or screed substrate should be a minimum of 3,625 psi, free from laitance, dust and other contamination. The substrate should be dry to ASTM requirements and free from excessive moisture vapor transmission

Products Included in this System

Peran WW – 2.0 gal unit (with addition of 8oz water)

Super:

Primer :	Peran WW	@ 200 sq ft/gal
1 st Bodycoat:	Peran WW	@ 175 sq ft/gal
300g chopped strand glass mat:		
2 nd Bodycoat:	Peran WW	@ 175 sq ft/gal
100g glass tissue:		
1 st Finish Coat:	Peran WW	@ 200 sq ft/gal
2 nd Finish Coat:	Peran WW	@ 200 sq ft/gal

Standard:

Primer :	Peran WW	@ 200 sq ft/gal
1 st Bodycoat:	Peran WW	@ 175 sq ft/gal
300g chopped strand glass mat:		
1 st Finish Coat:	Peran WW	@ 200 sq ft/gal
2 nd Finish Coat:	Peran WW	@ 200 sq ft/gal

Application and coverage rates at the Primer stage are assisted by the addition of water, up to maximum of 16oz per unit.

Detailed application instructions are available upon request.

*Coverages listed are theoretical, actual coverages may vary based on substrate and site variations.

Flooring Design Service

Special corporate colors and designs can be produced to special order.

Installation Service

The installation should be carried out by a Flowcrete preferred contractor with a documented quality assurance program. Obtain details of our preferred contractors by contacting our customer service team or enquiring via our web site www.flowcreteamericas.com

Technical Information

The figures that follow are typical properties achieved for Peran WW in laboratory tests at 68°F and at 50% Relative Humidity.

Fire Resistance	BS 476-7 Surface spread of flame: Class 1.
Temperature Resistance	Tolerant up to 160 °C
Vapor Permeability	ASTM:E96:90 - 20g / m ² / mm / 24 hr
Surface Hardness	182 secs. Koenig Hardness Test
Chemical Resistance	Good resistance to tea, coffee, cola, fruit juice, soaps and bleach. Contact Flowcrete Americas for chemical resistance chart
Abrasion Resistance	Taber Abrader: 15 mg loss per 1000 cycles (1kg load using CS17 wheels) BS 8204-2 Class AR3
Bond Strength	Greater than cohesive strength of 25N/mm ² concrete. >1.5 MPa.
VOC	26 g/l
Volume Solids	Approx. 50%

Environmental Considerations

The finished system is assessed as non-hazardous to health and the environment. The long service life and seamless surface reduce the need for repairs, maintenance and cleaning. Environmental and health considerations are controlled during manufacture and application of the products by Flowcrete staff and fully trained and experienced contractors.

Important Note - Warranty

Flowcrete's products are guaranteed against defective materials and manufacture and are sold subject to our standard Warranty, Terms and Conditions of Sale, copies of which can be obtained on request. Warranty does not cover suitability, fit for purpose or any consequential or related damages. Please review warranty in detail before using products.

Further Information

If you would like additional information please consult our Technical Advisory Team at the number listed below or visit our website to register your interest in specifying a Flowcrete flooring system.

Disclaimer: Any recommendation or suggestion relating to the use of the products made by Flowcrete Americas, whether in its technical literature, or in response to a specific enquiry, or otherwise, is based upon data believed to be reliable, however the products and information are intended for use by Customers having requisite skill and know-how in the industry and therefore it is for the Customer to satisfy itself of the suitability of the products for its own particular use and it shall be deemed that the Customer has done so at its sole discretion and risk.



Flowcrete Americas
616 Spring Hill Dr. Suite 100
Spring, TX 77386
Tel: +1 936 539 6700 Fax: +1 936 539 6701
Email: americas@flowcrete.com
Flowcrete Americas is an RPM company

www.flowcreteamericas.com