

The biggest bargain

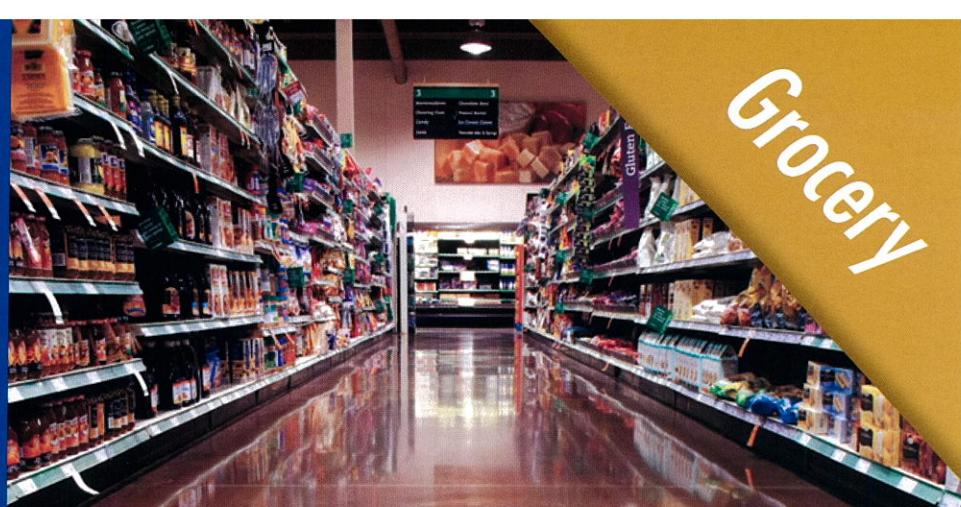
is the one they're walking on.

*They last like concrete
— because they are!*

Find out how Consolideck® floors can beautify
and simplify your operation by visiting
www.consolideck.com.

Or call toll-free 800-255-4255.

And treat yourself to a real bargain!



Grocery

- Cost less to install and maintain than nearly any other surface.
- Are stain, spill and abrasion-resistant.
- Make maintenance cleaning fast, easy and economical.
- Are highly reflective for better lighting at no extra cost.
- Meet the nation's highest indoor air quality standards.
- Last the life of your stores!

CONSOLIDECK®

HIGH PERFORMANCE CONCRETE

Consolideck® High-Performance Concrete Floors for grocery



DYNAMIC COATINGS, INC.

Industrial • Bio/Chemical • Retail
Industrial Seamless Floors and Walls

5629 East Westover Avenue, Suite A • Fresno, California 93727

Fresno	Sacramento	Los Angeles	Oakland
559.225.4605	916.485.6800	562.634.9887	510.352.7000

www.dynamiccoatingsinc.net

CSLB #763816



NSF REGISTERED
Consolideck® LS®
Consolideck® LS/CS®
Consolideck® LSGuard®



Grocery

Easy-to-use Consolideck® products

LS® (lithium-silicate): Premium hardener/densifier for concrete floors. Improves speed and economy of maintenance cleaning. In laboratory tests, LS improved abrasion resistance more than five times on polished concrete over unhardened, unpolished concrete, and outperformed the top five leading competitors.*

LS/CS® (lithium-silicate/colloidal salts): Economical hardener/densifier and dustproofer for concrete floors. Increases hardness, durability and service life of concrete floors. Improves speed and economy of maintenance clean up.

GemTone Stain: 21 water-based, penetrating colors for polished concrete. Safer, and better color-control than traditional solvent- and acid-based stains.

ColorHard: 21 rich, water-based colors, including White and Black, that harden/densify and decorate concrete flatwork in one simple step. Just mix with Consolideck® LS. Palette includes UV-stable colors appropriate for exterior use.

LSGuard®: Glossy sealer, hardener/densifier for steel-troweled, polished and decorated concrete floors. Resists spills and stains, and improves gloss and reflectance at every finish level.

PolishGuard: Glossy protective treatment makes decorative or plain interior concrete floors shine while shielding them from spills and stains. VOC-compliant PolishGuard resists etching from acidic liquids like vinegar and fruit juice.

GuardEXT: Protects outdoor flatwork from penetrating spills and stains, including oily food and automotive liquids, while enhancing appearance with a durable shine. Perfect for colored and other decorative concrete.

LSKlean Super Concentrate: Specialized blend of cleaners and degreasers contains a lithium-silicate hardener/densifier. Specially made to maintain maximum hardness – and cleanliness – of most any concrete floor.

See Product Data Sheets on these and other Consolideck® products for complete application and safety instructions. Visit www.consolideck.com.

*Call Technical Customer Care toll-free at 800-255-4255, or email customercare@prosoco.com for:

- LS test results
- Free job-site demos and problem-solving
- Answers to questions about products and procedures



COATINGS
SAFE

PROSOCO
SINCE 1939

www.consolideck.com • 800-255-4255 • www.prosoco.com