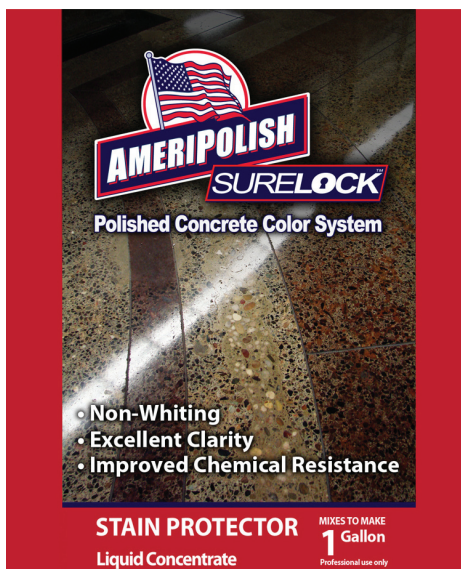




AmeriPolish® SureLock™ Stain Protector



PRODUCT FEATURES

◆ DESCRIPTION

Penetrating stain repellent finishing treatment for polished concrete

◆ USES

Adding stain repellance, color protection, and and color enhancement to diamond-polished concrete.

AmeriPolish® SureLock™ Stain Protector is part of the three-component SureLock™ Color System designed specifically for coloring and polishing concrete floors. To obtain optimum performance, all three system components, SureLock® Dye, SureLock® Densifier, and SureLock Stain Protector should be used together to lock in colors for long term beauty. This product can be used with dyes and densifiers from other manufacturers, however, optimum stain resistance and color retention cannot be assured.

◆ SELECTION CRITERIA

- AmeriPolish SureLock Stain Protector is a penetrating stain repellent specifically

formulated to protect polished, dyed concrete from oil and water-based stains and acidic etching agents.

- Bonds with the other SureLock Color System components to protect color in slab.
- Contains UV stabilizers to help protect colorants in concrete against fading.
- Provides “window of opportunity” to clean up spills before they stain or etch surface
- Low-odor, non-flammable, VOC compliant (< 40g/L)

◆ SUSTAINABILITY CRITERIA

Polished and exposed concrete floors are inherently sustainable because they eliminate the need for applied floor coverings. Exposed concrete floors are very durable, eliminating the need for periodic replacement of applied floor coverings.

It provides an easily cleanable floor with low-impact maintenance requirements (dry mop, wash with water or mild cleanser) that eliminates waxing and stripping chemicals, imposing

low life-cycle impacts on the environment.

Stain Protector is water based and has no VOCs. Reflectivity of polished and high sheen floors may help optimize lighting and reduce illumination-energy consumption.

◆ STORAGE AND HANDLING

Keep containers tightly sealed. Do not allow product to freeze, nor use product if it has been frozen.

◆ COST

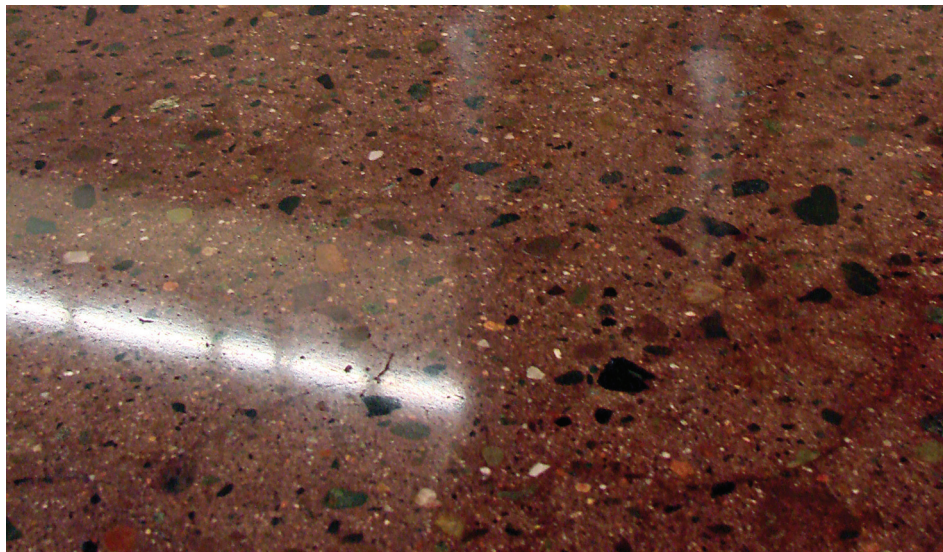
Comparable with conventional penetrating stain protectors.

◆ AVAILABILITY

Global.

◆ LIMITATIONS

New concrete must cure for at least 28 days before application. Not intended for exterior applications. While in most cases the SureLock Color System will extend resistance to color fading or dissipating, due to variables in application, maintenance, and the concrete itself, appearance may change over time.



◆ WARRANTY

This product is for use by licensed contractors. Since manufacturer does not exercise control of product's use or project conditions, American Decorative Concrete Supply Company (ADC) represents and warrants only that this product is of consistent quality within manufacturing tolerances. NO OTHER ORAL OR WRITTEN REPRESENTATION OR STATEMENT OF ANY KIND, EXPRESS OR IMPLIED, IS AUTHORIZED OR WARRANTED BY ADC, INCLUDING THOSE OF MERCHANTABILITY OR FITNESS FOR A PARTICULAR PURPOSE, OR THE EFFECTS OR RESULTS OF SUCH USE. ADC WILL NOT BE LIABLE FOR SPECIAL, INCIDENTAL OR CONSEQUENTIAL DAMAGES, INCLUDING DAMAGES FOR DELAYS OR LOST PROFITS. Claims must be made in writing and received within one year from date of product sale to original buyer. Sole remedy shall be replacement of product proven defective.

◆ SAFETY PRECAUTIONS

WARNING – Before using or handling this material, read the Material Safety Data Sheet and Warranty. **EYE, SKIN, AND GASTRO-INTESINAL TRACT AND RESPIRATORY TRACT IRRITANT.** Avoid contact with eyes, skin and clothing. Avoid breathing vapors or mists generated by this product. Use appropriate eye protection, respirator, and chemical-resistant gloves. Make sure rooms are properly ventilated. Open windows and use fans to achieve air movement. Material is not flammable, but if exposed to fire, material may ignite and produce irritating vapors and toxic gases (e.g., carbon oxides and peroxides). **KEEP OUT OF REACH OF CHILDREN. DO NOT TAKE INTERNALLY.**

PRODUCT PROPERTIES

◆ COMPOSITION

Ameripolish SureLock Stain Protector concentrate is a water-based polysilicate/acrylic mixture. It is milky blue liquid with a slight ammonia odor. It is intended to be diluted with water by the user.

◆ PROPERTIES

SureLock Stain Protector penetrates concrete



surfaces. It helps protect against stains and etching agents, and to minimize moisture infiltration that might cause color migration or dispersion. It contains a UV stabilizer to minimize color fading.

PRODUCT PLACEMENT

◆ PREPARATION

WARNING: People, property, vehicles, animals, plants, and surfaces not intended to be stain-protected should be protected from the product, splash, overspray, and wind drift, using polyethylene sheeting or other proven protective material.

Complete all grinding, coloring, densification and polishing before applying.

Thoroughly clean the surface that SureLock Stain Protector is to be applied to, removing all

oil, dirt, laitance and other contaminants. Vacuum and clean surface with autoscrubber and fresh water. Allow to dry thoroughly.

◆ DILUTION AND COVERAGE

SureLock Stain Protector is shipped as a concentrate. Dilute with water in a 1:1 ratio.

For 1 Gal Pack: Pour .5 gal (3.8 L) Stain Protector concentrate into 1.5 gal (5 L) plastic bucket. Add .5 gal (3.8 L) clean potable water to make working solution.

For 5 Gal Pack: Pour 2.5 gal (9.5 L) Stain Protector concentrate into 5 gal (20 L) plastic bucket. Add 2.5 gal (9.5 L) clean potable water to make working solution.

On polished concrete floors, SureLock Stain Protector will cover approximately 2000 - 2500 sf / gal (49-60 m² / L) for each application, depending on the porosity of the concrete. Use

AmeriPolish® SureLock™ Stain Protector

test areas to determine appropriate application procedure and adjust application rate.

◆ APPLICATION

Testing: Prior to starting project, apply SureLock Stain Protector to sample area of each type of concrete to be treated, using application procedures proposed for project. Confirm that concrete is receptive to stain protector.

Project Conditions: Ambient temperature during application should be 40-90°F (4-32°C).

Equipment: Apply SureLock Stain Protector using a combination of Patriot™ 500 or pump sprayer fitted with Patriot Green #4 or similar conical mist tip with 4.2 gal/hr flow at 40 psi, (15.9 L/hr at 275.8 kPa) (**DO NOT** use Patriot 350 CO₂ Sprayer), and a SureLock microfiber pad or similar microfiber floor finish applicator pad.

Application: SureLock Stain Protector provides the best protection when applied in two light “film” coats.

1. Submerge applicator in Stain Protector to wet thoroughly. Ring out excess material.
2. Spray first coat of SureLock Stain Protector. Submerge SureLock microfiber mop in Stain Protector to wet thoroughly. Ring out excess material. Spray a light mist of SureLock Stain Protector onto concrete surface, and immediately spread evenly with SureLock microfiber mop. Apply enough material to attain 100% coverage, without either dry streaking or puddling.
3. Allow first application to dry to a tack-free state.
4. Apply the second coat using same spray and spread method. 5. Allow to dry and cure overnight.
6. Do not burnish until Stain Protector has cured for 24 hours.

7. Burnish with high speed burnisher such as propane burnisher, fitted with 3000 grit or finer diamond-impregnated pad.

8. Chemical resistance gains strength over time. Avoid exposure to etching agents for 7 days if possible.

Areas that will be exposed to excessive, on-going spills may benefit from a third application of Stain Protector before burnishing. If additional applications are desired, check that work surface is tack-free before proceeding.

◆ NEXT STEPS

Floor is ready for light foot traffic when Stain Protector is tack-free; ready for equipment traffic within 24 hours. Stain Protector cures fully within seven days. However, concrete, even after becoming densified and polished, is still a porous substrate. Densifiers can take 2-6 months to attain full densification.

◆ MAINTENANCE

Spills of staining agents or acidic etching agents including acidic food substances (e.g. vinegar, pickle juice) should be cleaned up immediately to minimize damage to surface.

Remove dust and debris with microfiber pad or dry mop.

Surface should be cleaned regularly using an automatic floor scrubber with AmeriPolish® SureLock™ Replenishing Cleaner, mixed with water according to manufacturer's directions. Replenishing Cleaner is a pH neutral formula that will not damage concrete and replenishes the Stain Protector application to maintain liquid and chemical resistance. **DO NOT** use acidic cleansers. Autoscrubber

should be fitted with non-aggressive cleaning tools such as brushes. Do not perform regular maintenance with aggressive pads such as diamond-impregnated pads or other abrasives. Use of aggressive pads will wear away stain protection and may, in time, wear away color from concrete surface.

Stain Protector may be easily re-applied whenever deemed necessary. Re-application at least once every two years is recommended, or more often depending on wear and usage conditions. If an improper cleaner is used, reapplication might be warranted. Clean floor thoroughly, allow to dry completely, and then repeat original application instructions.

◆ First Aid

Ingestion: CALL PHYSICIAN OR POISON CONTROL CENTER FOR MOST CURRENT INFORMATION. If professional advice is not available, **DO NOT** INDUCE VOMITING. If victim is convulsing, maintain an open airway and obtain immediate medical attention.

Eye Contact: Rinse eyes under gently running water. Use sufficient force to open eyelids and then “roll” eyes while flushing. Flush for 15 minutes minimum. Seek medical attention if any adverse effect continues after rinsing.

Skin Contact: If adverse skin effects occur, discontinue use and flush contaminated area. Seek medical attention if adverse effect occurs after flushing.

Inhalation: Remove victim to fresh air. If necessary, use artificial respiration to support vital functions. If adverse effect continues after removal to fresh air seek medical attention.



American Decorative Concrete Supply Company 120 Commercial Ave., Lowell, AR 72745 USA
Toll Free: 1.800.592.9320 Office: +1 479.725.0033 Fax: +1 479.725.0031
info@adcsc.com ◆ www.adcsc.com