

AmeriPolish OS

Coloring & Polishing System for Overlays



SYSTEM FEATURES

DESCRIPTION

AmeriPolish® OS is a complete system of treatments for coloring, polishing, protecting and maintaining cementitious overlay floors. It is compatible with most cementitious overlays.

The system consists of:

AmeriPolish OS Integral Color, pre-measured liquid pigment designed especially for cementitious overlays.

AmeriPolish OS Densifier, lithium silicate-based densifier/hardener that improves resistance to liquid penetration and abrasion, minimizes dusting, and prepares surface for high-gloss diamond polishing.

AmeriPolish OS Dye, surface-applied dye with enhanced penetrating properties needed by cementitious overlays.

AmeriPolish WB OS Stain Protector, breathable, water-based sealer to protect color and help resist staining and etching.

AmeriPolish OS Cleaner, a compatible cleanser that also helps replenish stain protection.

USES

The AmeriPolish OS System is designed for coloring and polishing self-leveling polishable cementitious overlays. Overlays are fast-curing toppings that can be poured onto a concrete slab to create a durable and attractive floor surface. They can be used to finish a rough concrete slab, rehabilitate damaged floors, or provide an alternative appearance to concrete due to their slightly different base color and granularity.

Conventional coloring and polishing chemistry can be incompatible with overlays. The



Ameri-Polish OS system, however, has unique properties to enhance compatibility and optimize results.

All components of system should be used together to lock in colors for long term beauty and durability. Products can be used individually with components from other manufacturers, however, optimum hardening, stain resistance and color retention cannot be assured.

SELECTION CRITERIA

- Works as a system to provide an integrated solution for coloring and polishing cementitious overlays.
- Colorful results. Integral color and surface-applied dye can be used singly or in combination for a variety of color effects.
- Tested and approved by CTS Rapid Set® for use with Rapid Set TRU™. Also compatible with other leading overlay brands.
- Easy to use, speeds completion. May be applied to new or existing overlays.
- Durable, long lasting beauty.

SUSTAINABILITY

Polished and exposed cementitious overlay

“Rapid Set” and “TRU” are trademarks of the CTS Cement Manufacturing Corp.

floors are inherently sustainable because they have low life-cycle impacts on environment. Low-impact maintenance requirements eliminate need for waxing and stripping chemicals used with floor coverings such as vinyl composition tile. Exposed cementitious overlay floors are very durable, eliminating the need for periodic replacement of floor coverings.

Use overlays to rehabilitate damaged concrete rather than replacing it, lowering carbon emissions, energy consumption, and materials consumption.

Products are low-VOC (< 40g/L) or exempt from VOC regulation.

Reflectivity of polished and high sheen floors may help optimize lighting and reduce illumination-energy consumption.

AVAILABILITY

Global.

COST

Comparable with other concrete coloring and polishing materials. Can lower cost compared to some floor coverings. system improves resistance to color fading in most installations, a floor's appearance may change over time due to application, maintenance, and natural variations in concrete.

Patent Pending

AmeriPolish OS Coloring & Polishing System for Overlays

WARRANTY

This product is for use by licensed contractors. Since manufacturer does not exercise control of product's use or project conditions, AmeriPolish, Inc. represents and warrants only that this product is of consistent quality within manufacturing tolerances. NO OTHER ORAL OR WRITTEN REPRESENTATION OR STATEMENT OF ANY KIND, EXPRESS OR IMPLIED, IS AUTHORIZED OR WARRANTED BY AMERIPOLISH, INC., INCLUDING THOSE OF MERCHANTABILITY OR FITNESS FOR A PARTICULAR PURPOSE, OR THE EFFECTS OR RESULTS OF SUCH USE. AMERIPOLISH, INC. WILL NOT BE LIABLE FOR SPECIAL, INCIDENTAL OR CONSEQUENTIAL DAMAGES, INCLUDING DAMAGES FOR DELAYS OR LOST PROFITS. Claims must be made in writing and received within one year from date of product sale to original buyer. Sole remedy shall be replacement of product proven defective.

SYSTEM OVERVIEW

In general, using the AmeriPolish OS system to make a colored, polished overlay floor includes the following steps:

- 1) Prepare concrete substrate.
- 2) Mix overlay; optionally, add AmeriPolish OS Integral Color for base color.
- 3) Pour overlay; allow to cure.
- 4) Diamond-grind to smooth surface and open pores.
- 5) Densify with AmeriPolish OS Densifier to make the surface more receptive to polishing, and improve resistance to abrasion and liquid penetration.
- 6) Diamond-polish to 800-grit.
- 7) Optionally, use AmeriPolish OS Dye to intensify, complement, or contrast base color.
- 8) Diamond-polish further if higher gloss is desired.
- 9) Seal with AmeriPolish WB OS Stain Protector.
- 10) Clean and replenish stain-protection with AmeriPolish OS Cleaner.

GENERAL PREPARATION

WARNING: Protect people, property, vehicles, animals, plants, and surfaces not intended to be treated from splash, overspray, and wind drift. Use polyethylene sheeting or other proven protective material. Surfaces, animals, or clothing contacted by Integral Color or Dye may be permanently discolored. New concrete slabs must have cured at least 28 days before application.

Prepare substrate in accordance with overlay manufacturer's directions.

When used with Rapid Set TRU, consult manufacturer's technical bulletin "Polishing TRU Self Leveling" for special instructions on substrate preparation.

Surfaces must be clean and dry before application of each element of the AmeriPolish OS system.

Do not apply if floor is frozen, dirty or has standing water. Surfaces should be clean, structurally sound, and free of sealants, adhesives, bond breakers, curing compounds, curing agents, surface grease, oil, construction debris, and other contaminants.

SAFETY PRECAUTIONS

WARNING – BEFORE USING OR HANDLING THESE MATERIALS, READ THE MATERIAL SAFETY DATA SHEET, INSTRUCTIONS ON PACKAGING, AND WARRANTY FOR EACH OF THE RESPECTIVE PRODUCTS. SYSTEM INCLUDES IRRITANTS AND CONCENTRATED ALKALINE SOLUTIONS. Avoid contact with eyes, skin, clothing. Use appropriate eye protection, respirator, and chemical-resistant gloves. Make sure rooms are properly ventilated. Open windows and use fans to achieve air movement. KEEP OUT OF REACH OF CHILDREN. DO NOT TAKE INTERNALLY.



AmeriPolish OS Coloring & Polishing System for Overlays

INTEGRAL COLOR

Composition

AmeriPolish OS Integral Color is a concentrated liquid dispersion of mineral oxide pigment particles. Pigments meet ASTM C979, *Standard Specification for Pigments for Integrally Colored Concrete* and are available in a broad range of hues.

Properties

AmeriPolish OS Integral Color is specifically formulated for compatibility with cementitious overlays. It is approved by the manufacturer of Rapid Set® TRU™, a leading cementitious self-levelling polishable overlay.

Integral Color becomes a permanent part of cementitious overlay

Additional Safety Precautions

May permanently stain. See general Safety Precautions, Page 2.

Dosage

AmeriPolish OS Integral Color is shipped in pre-measured packages for simplified and accurate mixing. Containers are sized in units matched to 50-lb bags of Rapid Set TRU overlay powder. One pre-measured unit equals a standard color dose for one 50-lb bag of TRU.

The standard dosage of AmeriPolish OS Integral Color is 2% of weight of cementitious materials. Greater color intensity can be achieved by using up to 4% dosages.

For example, a 4% (high intensity) dosage is obtained by mixing two units of AmeriPolish OS Integral Color into one 50-lb (22.7 kg) bag Rapid Set TRU.

Standard container sizes:

- 1-unit stand-up pouch
- 2-unit stand-up pouch
- 3-unit stand-up pouch
- 5-unit jug (0.5 gal / 1.9 L)
- 10-unit jug (1 gal / 3.8 L)

For larger quantities, consult factory.

Use test batches to determine appropriate dosage for desired color and intensity.

MixingIntoOverlays: Mix overlay according to overlay manufacturer's recommended proportions for water-to-overlay. DO NOT



ADJUST WATER QUANTITY; ADD AMERIPOLISH OS INTEGRAL COLOR UNDILUTED AS ADDITIONAL LIQUID.

- 1) Add water to mixer or mixing container.
- 2) Add AmeriPolish OS Integral Color. Mix.
- 3) Add overlay. Mix.

Coverage of colored overlay is the same as uncolored overlays. Use overlay manufacturer's coverage estimates.

Application

Apply overlay according to overlay manufacturer's instructions.

Curing

Cure according to overlay manufacturer's directions. During curing, do not allow plastic sheeting or other covering material to touch surface, as this may alter surface color. Some manufacturer's provide special curing instructions for overlays that will be ground or polished. Premature grinding and polishing may alter the surface chemistry of some overlays. In the absence of special instructions, test a sample area of the material before proceeding.

AmeriPolish OS Coloring & Polishing System for Overlays

DENSIFIER

Composition

AmeriPolish OS Densifier is a proprietary lithium silicate-based formulation. It is a milky white, odorless liquid concentrate.

Properties

AmeriPolish OS Densifier hardens and densifies overlay surface by reacting with lime (calcium hydroxide) in overlay to form insoluble calcium-silicate-hydrates (CSH) that become a permanent part of overlay. This new CSH creates additional cementitious bonds that harden surface and plug microscopic pores to reduce surface porosity. It contains a UV stabilizer to minimize fading of colorants.

It does not leave excess mineral salts (whiting) on surface unless over-applied.

Additional Safety Precautions

WARNING: ALKALINE CONCENTRATE: CONTACT CAN QUICKLY DAMAGE EYES, SKIN AND OTHER BODY TISSUES. HANDLE WITH CARE. EYE, SKIN, AND DIGESTIVE TRACT IRRITANT. SPRAY MIST IS RESPIRATORY TRACT IRRITANT. Use with adequate ventilation. Do not breathe vapors or spray mist. Possible developmental hazard: contains lithium, may adversely affect developing fetus. Observe appropriate safety and jobsite controls. Ensure fresh air flow during application and until dry. If you experience headaches, dizziness, eye watering, or if air monitoring shows vapor/mist levels above applicable limits, wear a properly fitted carbon filter respirator. See general Safety Precautions, Page 2. **KEEP OUT OF REACH OF CHILDREN. DO NOT TAKE INTERNALLY.**

Special Preparation

- 1) Grind overlay up to 200-grit resin-bond diamonds.
- 2) Remove dust and debris. If wet cleaning is performed, allow surfaces to dry.
- 3) Vacuum surfaces thoroughly.

Dilution and Coverage

AmeriPolish OS Densifier is shipped as a concentrate designed to be diluted with potable



water in a 1:1 ratio to make working solution.

Mixing:

For 1 gallon (3.8 L): Pour 0.5 gal (1.9 L) water into a clean, empty 1.5 gal (5 L) plastic bucket. Add 0.5 gal (1.9 L) AmeriPolish OS Densifier concentrate.

For 5 gallons: Pour 2.5 gal (9.5 L) water into a clean, empty 5 gal (20 L) plastic bucket. Add 2.5 gal (9.5 L) AmeriPolish OS Densifier concentrate.

Coverage varies depending on overlay porosity, and moisture content, and on ambient conditions. Use test areas to determine appropriate application procedure and adjust application rate. As a starting point to determine coverage:

500-700 sf / gal (12-17m² / L)

Testing:

Prior to starting project, apply Densifier to sample area of each type of surface to be treated, using applications procedures

proposed for project, to confirm that surfaces are receptive to Densifier.

Project Conditions: Ambient and substrate temperature during application should be 40-100°F (4-38°C).

Equipment: Spray apply AmeriPolish OS Densifier using Patriot™ Pump Sprayer or similar low pressure sprayer with Patriot Gray #8 or similar conical mist tip with 8.4 gal / hr flow at 40 psi (32 L / hr at 276 kPa). Spread using Ameri-Polish OS microfiber pad or similar floor finish applicator pad.

Application

1) Spray AmeriPolish OS Densifier with overlapping circular motion. Lightly use pad applicator fitted with AmeriPolish OS microfiber pad or similar microfiber floor finish applicator pad to spread Densifier evenly on surface before product dries. Product does not need vigorous scrubbing-in and will not form a gel. As product is absorbed into surface, apply additional product as needed until floor starts to reject product. Over-application or puddles of excess material will lengthen drying time, and may produce white surface residue that must be removed immediately. In the event of over-application, call manufacturer at 800.592.9320 or +1 479.725.0033 for removal instructions.

2) Clean tools and equipment with fresh water before product dries. Overspray on unprotected surfaces should be immediately washed off with fresh water.

3) Allow surface to dry.

4) Polish with progressively finer abrasives up to 400-grit resin bond diamonds.

5) Apply second application of AmeriPolish OS Densifier in same manner as first coat. Some surfaces may be hard and dense enough to reject second application of densifier, in which case no further densification is needed.

6) Allow surface to dry.

7) Polish with 800-grit resins.

Absorption resistance of densified surface continues to develop over 7 days. However, cementitious overlay, even after becoming densified and polished, is still a porous substrate.

AmeriPolish OS Coloring & Polishing System for Overlays

DYE

OS Integral Color only						
OS Integral Color + OS Dye accent						
OS Integral Color only						All colors are close approximations. Actual colors may vary depending on base concrete color and porosity.
OS Integral Color + OS Dye accent						

Composition

AmeriPolish OS Dye is a liquid dispersion of nano-sized colorant particles in a proprietary non-combustible solvent. It is designed to be used without dilution.

Properties

AmeriPolish OS Dye colors cementitious overlays, penetrating the substrate surface more readily than acetone-based dyes. It may also be effective on hard, dense concrete slabs that refuse acetone-based dyes. It covers approximately twice as much as conventional solvent-based dyes.

It is a premixed, ready-to-use liquid. It contains UV stabilizers to help protect colorants against fading.

Additional Safety Precautions

WARNING: EYE IRRITANT. ASPIRATION HAZARD IF SWALLOWED - CAN ENTER LUNGS AND CAUSE DAMAGE. Avoid breathing vapors or mist. Make sure rooms are properly ventilated. Open windows and use fans to achieve air movement. Exhaust devices may be required in areas with poor ventilation. May permanently stain. See general Safety Precautions, Page 2. **KEEP OUT OF REACH OF CHILDREN. DO NOT TAKE INTERNALLY.**

Special Preparation

When using with overlays that form a polymer curing cap or skin, cap must be ground off before dyeing.

If design requires discreet areas of color, mask

adjoining areas, lining color edges with painter's blue tape or similar adhesive masking material.

Dilution and Coverage

AmeriPolish OS Dye is shipped as a fully dilute, ready-to-use solution.

Coverage varies depending on concrete mixture, porosity, and moisture content and on ambient conditions. Use test areas to determine appropriate application procedure and adjust application rate.

As a starting point to determine coverage:

1200 sf / gal (29.5 m² / L)

APPLICATION

Testing: Prior to starting project, apply AmeriPolish OS Dye to sample area of each type of cementitious overlay or concrete to be treated, using applications procedures proposed for project. Confirm that surface is receptive to dye and that color is acceptable.

For dyeing concrete: AmeriPolish OS Dye may also be useful dyeing concrete that is too dense to be penetrated by conventional acetone-based dye. For best results perform a moisture content test on both newly-poured and existing slabs. Slabs with a moisture content of 5 lbs per 1000 sf (2.3 kg per 93m²) or less show best performance with dye (calcium chloride test per ASTM F1869). High moisture levels may affect performance of color.

Project Conditions: Ambient and substrate temperature during application should be 40-100°F (4-38°C).

Equipment: Spray apply AmeriPolish OS Dye

using a pump sprayer or similar low pressure sprayer with a red #6 or similar conical mist tip with 6.4 gal / hr flow at 40 psi (24 L/hr 276 kPa) and AmeriPolish micro-fiber applicator pad.

Application Instructions:

- 1) Spray single application of dye to lightly wet surface without creating puddles. Apply in a consistent, overlapping circular motion, holding wand approximately 12- 18 inches above surface. Lightly mist surface and spread with micro-fiber pad. Dye will absorb into surface more quickly in some places than others. This is normal and does NOT indicate that extra dye is needed.
- 2) Allow to dry.
- 3) Immediately upon completion of application, run acetone through the pump and wand to clean them, followed by clean water. (ACETONE IS HIGHLY FLAMMABLE. FOLLOW MANUFACTURER'S SAFETY INSTRUCTIONS. APPROPRIATE SAFETY AND HEALTH PRECAUTIONS ARE REQUIRED.) Pump cleaning is recommended between color changes and prior to storing sprayer.
- 4) Remove dye residue from overlay surface with autoscrubber fitted with white pad and water. Perform white-rag test to assure residue is removed. Wipe a dry white rag across the floor. A light tinge of residual color on the rag is acceptable, but strong color indicates excessive dye must still be removed.
13. Allow to dry
14. Continue polishing process to 1500-grit or 3000-grit if higher gloss is desired.

AmeriPolish OS Coloring & Polishing System for Overlays

STAIN PROTECTOR

Composition

AmeriPolish WB OS Stain Protector concentrate is a water-based polysilicate/acrylic mixture. It is milky blue liquid with a slight ammonia odor. It is intended to be diluted with water by the user.

Properties

AmeriPolish WB OS Stain Protector is a breathable sealer that helps to protect surface against stains and etching, and to minimize liquid infiltration that might cause color migration or dispersion. It contains a UV stabilizer to minimize fading of colorants.

Additional Safety Precautions

WARNING: EYE, SKIN, AND GASTROINTESTINAL TRACT AND RESPIRATORY TRACT IRRITANT. Avoid contact with eyes, skin and clothing. Avoid breathing vapors or mists generated by this product. If involved in a fire, this product will release smoke, acrid vapors and toxic gases (e.g., carbon oxides and silicon oxides). **IF THE WATER IN THIS PRODUCT EVAPORATES OFF, THE REMAINING RESIDUE IS COMBUSTIBLE.** See general Safety Precautions, Page 2. **KEEP OUT OF REACH OF CHILDREN. DO NOT TAKE INTERNALLY.**

Special Preparation

Complete all grinding, coloring, densification and polishing before applying.

Thoroughly clean surface, removing oil, dirt, laitance and other contaminants. Vacuum and clean surface with auto-scrubber and fresh water.

Allow to dry thoroughly.

Dilution and Coverage

AmeriPolish WB OS Stain Protector is shipped as a concentrate. Dilute with water in a 1:1 ratio. For 1 gallon (3.8 L): Pour 0.5 gal (1.9 L) Stain Protector concentrate into 1.5 gal (5 L) plastic bucket. Add 0.5 gal (1.9 L) clean potable water to make working solution.

For 5 Gallons (19 L): Pour 2.5 gal (9.5 L) Stain Protector concentrate into 5 gal (20 L) plastic bucket. Add 2.5 gal (9.5 L) clean potable water to make working solution.

On polished overlay floors, AmeriPolish WB OS Stain Protector will cover approximately 2000 - 2500 sf / gal (49-60 m² / L) for each application, depending on the porosity of overlay. Use test areas to determine appropriate application procedure and adjust application rate.

Application

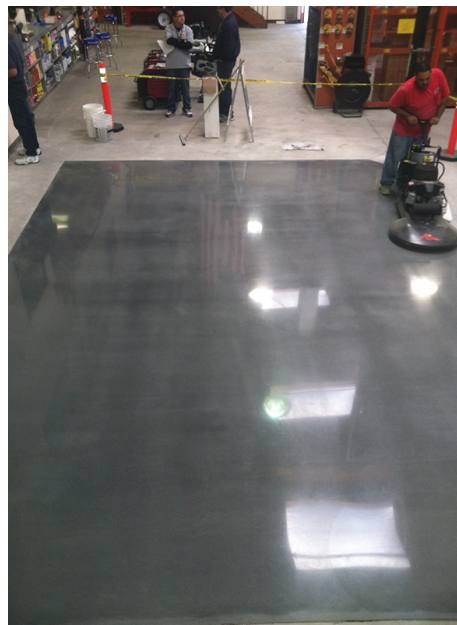
Testing: Prior to starting project, apply AmeriPolish WB OS Stain Protector to sample area of each type of surface to be treated, using applications procedures proposed for project. Confirm that surface is receptive to stain protector.

Project Conditions: Ambient and substrate temperature during application should be 40-90°F (4-32°C).

Equipment: Apply AmeriPolish WB OS Stain Protector using a combination of Patriot Pump Sprayer or similar low pressure sprayer, fitted with a Patriot Green #4 or similar conical mist tip with 4.2 gal/hr flow at 40 psi, (15.9 L / hr at 276 kPa), and AmeriPolish OS microfiber pad or similar microfiber floor finish applicator pad.

Application: AmeriPolish WB OS Stain Protector provides the best protection when applied in two light coats.

1) Submerge applicator in Stain Protector to wet thoroughly. Ring out excess material.



2) Spray first coat of AmeriPolish WB OS Stain 2) Spray light mist of AmeriPolish WB OS Stain Protector onto surface, and immediately spread evenly with microfiber pad. Apply enough material to attain 100% coverage, without either dry reaking or puddling.

3) Allow first application to dry to tack-free state.

4) Apply the second coat using same method.

5) Allow to dry and cure overnight. Do not burnish until Stain Protector has cured for 24 hours.

6) Burnish with high speed burnisher such as propane burnisher, fitted with 3000-grit or finer diamond-impregnated pad.

Areas that will be exposed to excessive, on-going spills may benefit from a third application of Stain Protector before burnishing. If additional applications are desired, check that work surface is tack-free before proceeding.

NEXT STEPS

Floor is ready for light foot traffic when Stain Protector is tack-free; ready for equipment traffic within 24 hours. Stain Protector cures fully within seven days; avoid exposure to etching agents during this period if possible. Chemical resistance gains strength over time.

Maintenance

Spills of staining agents or acidic etching agents (e.g. vinegar, pickle juice) should be cleaned up immediately to minimize damage to surface.

Remove dust and debris with microfiber pad or dry mop.

DO NOT use acidic cleansers. (see page 7)

Re-apply Stain Protector at least once every two years is, or more often depending on wear and usage conditions. If an improper cleaner is used, reapplication might be required. Clean floor thoroughly, allow to dry completely, and then repeat original application instructions.

AmeriPolish OS Coloring & Polishing System for Overlays

CLEANER

Floor should be cleaned regularly with an autoscrubber using AmeriPolish OS Cleaner. AmeriPolish OS Cleaner will not damage concrete and replenishes Stain Protector application to maintain liquid and chemical resistance.

Composition

AmeriPolish OS Cleaner is a cleanser and stain protection replenisher. It is a mild, pH neutral formula designed for polished overlay floors. It is a water-based concentrate intended to be diluted with water by the user.

Properties

AmeriPolish OS Cleaner cleans polished cementitious overlay surfaces without damaging overlay or existing Stain Protector applications. It adds liquid repellance to the surface, helps to protect against scratches and other normal wear, and helps replenish the AmeriPolish WB OS Stain Protector application.

It does not damage concrete surface (as do acidic cleansers.)

Additional Safety Precautions
WARNING: EYE, SKIN, AND GASTROINTESTINAL TRACT IRRITANT. Avoid contact with eyes, skin and clothing. Avoid breathing vapors or mists generated by product. If exposed to fire, material may ignite and produce irritating vapors and toxic gases (e.g., carbon oxides and peroxides). See general Safety Precautions, Page 2. KEEP OUT OF REACH OF CHILDREN. DO NOT TAKE INTERNALLY.

Special Preparation

Objects on floor that must be kept dry should be removed from cleaning area. Sweep surface with microfiber pad or vacuum to remove grit that could cause scratches.

Dilution and Coverage

Dilute with clean, potable water.

For Autoscrubber with 30 gal (115 L) tank: Pour 30 oz. (0.89 L) Cleaner concentrate bottle into full tank of water.

All other Uses: Mix 1 oz. (30 mL) Cleaner concentrate per 1 gal (3.8 L) water.



Coverage is dependent on scrubbing equipment used.

Application

Equipment: Apply AmeriPolish OS Cleaner with a mop or autoscrubber. Autoscrubber should be fitted with non-aggressive cleaning tools such as brushes. Do not perform regular maintenance with aggressive pads such as diamond-impregnated pads or other abrasives. Use of aggressive pads will wear away stain protection and may, in time, wear away color from surface.

Application: Clean using autoscrubber according to autoscrubber manufacturer's directions. After cleaning, allow to dry before resumption of traffic.

MAINTENANCE

Between cleanings, remove dust and debris with microfiber pad or dry mop.

Check wear of floor on a regular basis to determine if Stain Protector needs to be re-applied.

AmeriPolish OS Coloring & Polishing System for Overlays

First Aid

Contaminated individuals must seek medical attention if adverse effect occurs. Take copy of label and MSDS to physician or health professional with contaminated individual.

Ingestion:

Never induce vomiting or give diluents (milk or water) to someone who is unconscious, having convulsions, or unable to swallow. If victim is convulsing, maintain an open airway. Obtain immediate medical attention.

Integral Color, Densifier, and Stain Protector:

DO NOT INDUCE VOMITING. If product is swallowed, CALL PHYSICIAN OR POISON CONTROL CENTER. Drink large quantities of water or milk. Seek medical attention immediately.

Dye:

DO NOT INDUCE VOMITING. ASPIRATION HAZARD IF SWALLOWED - CAN ENTER LUNGS AND CAUSE DAMAGE. Wash out mouth with water. Get medical attention.

Cleaner:

Induce vomiting by giving 2 glasses of water and placing finger down throat. Call a physician.

Eye Contact:

Remove contact lenses. Immediately flush eyes for 20 minutes in clear running water. Use sufficient force to open eyelids and then "roll" eyes while flushing.

Integral Color, Stain Protector:

Seek medical attention if any adverse effect continues after rinsing.



Densifier, Dye, and Cleaner:

After flushing with water, seek medical attention immediately.

Skin Contact:

Wash affected area with soap and water. If adverse skin effects occur, discontinue use and flush contaminated area. Seek medical attention if adverse effect occurs after flushing.

Densifier:

DO NOT attempt to neutralize with chemical agents.

Cleaner:

Immediately remove contaminated clothes.

Inhalation:

Moved victim to fresh air. Keep victim warm and at rest. If not breathing, breathing is

irregular, or if respiratory arrest occurs, provide artificial respiration or oxygen by trained personnel. Seek medical attention if adverse effect continues after removal to fresh air.

Integral Color, Stain Protector and Cleaner:

If necessary, use artificial respiration to support vital functions.

Dye:

It may be dangerous to the person providing aid to give mouth-to-mouth resuscitation. If unconscious, place in a recovery position and get medical attention immediately. Maintain an open airway. Loosen tight clothing such as collar, tie, belt of waistband.

Densifier:

Wash mouth and nasal passages with water repeatedly. If breathing difficulties persist, seek medical attention.



AmeriPolish, Inc. 120 Commercial Ave., Lowell, AR 72745 USA
Toll Free: 800.592.9320 Office: +1 479.725.0033 Fax: +1 479.725.0031
info@ameripolish.com • www.ameripolish.com